

# CloudRouter®

**Build instant virtual networks between your different clouds, SaaS applications, IoT devices, enterprise locations, other networks and more.**

Console Connect's CloudRouter® removes the complexity of network configuration and management by creating a private and secure network between your different network endpoints.

What makes CloudRouter® different is that it creates a virtual 'full mesh' between network endpoints, ensuring that network traffic benefits from enhanced routing between data centre locations and the cloud. Simply use the Console Connect centralised management portal to add or remove new network edge locations and let CloudRouter® do the rest.

CloudRouter® is the perfect fit for your multi-cloud environment, enabling you to seamlessly connect your different clouds and SaaS applications at the click of a button - without the need to install, manage or maintain any equipment.

But CloudRouter® goes beyond multi-cloud connectivity, giving you the ability to create a scalable, virtual Layer 3 full mesh network that ebbs and flows according to the needs of your business.

# Why **CloudRouter®** is for you

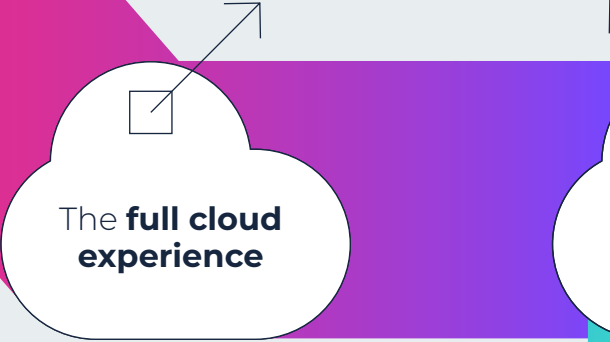
Avoid backhauling your network traffic between data centre locations and the cloud.



**More efficient routing**

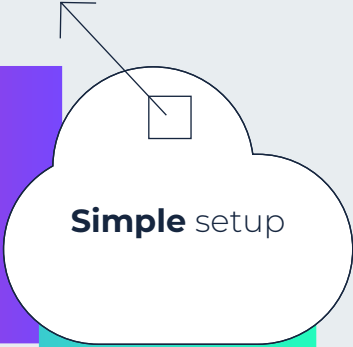
CloudRouter® gives you the ability to transfer data between clouds within your own virtual Layer 3 network, without the need for a physical Access Port at a data centre.

Only configure your site once and CloudRouter® will create a virtual 'mesh' between all your other network endpoints.



**The full cloud experience**

Setup a virtual network connection for as little as a day, and manage the aggregate bandwidth of your CloudRouter® (or routers) through the Console Connect platform.

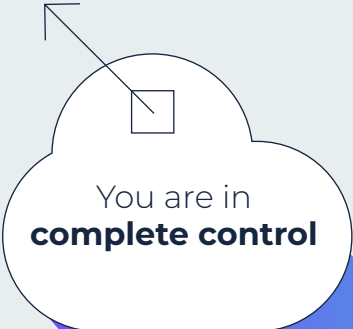


**Simple setup**

CloudRouter® leverages Console Connect's own private, uncontended carrier network and allows users to select from different tiers of Class of Service.



**High-performance**



**You are in complete control**

Find out **more**

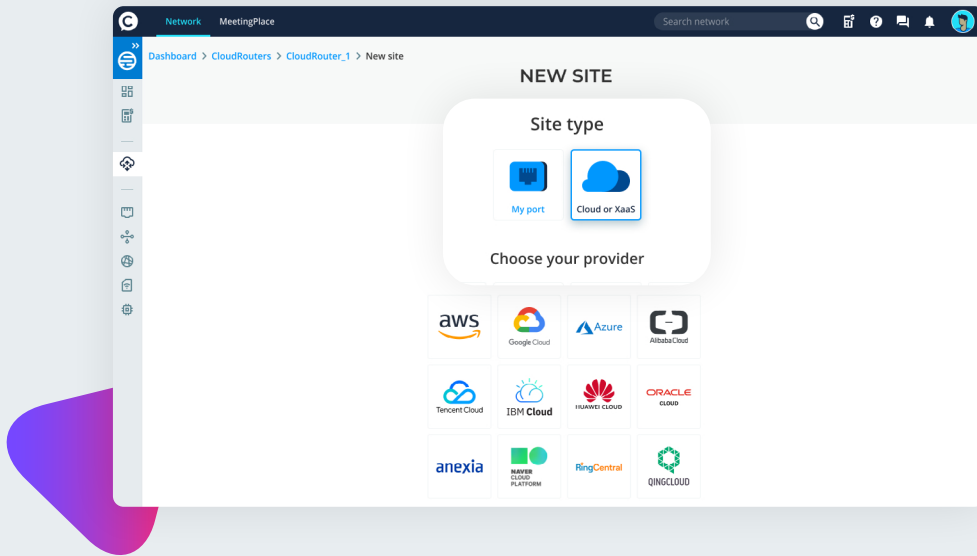


**Truly global reach**

Extensive reach to every major cloud provider and a growing number of SaaS partners, with a choice of more than 150 partner on-ramps worldwide.

# Keeping **cloud connectivity simple**

The move to multi-cloud can be complex, but CloudRouter® keeps your cloud connectivity simple.



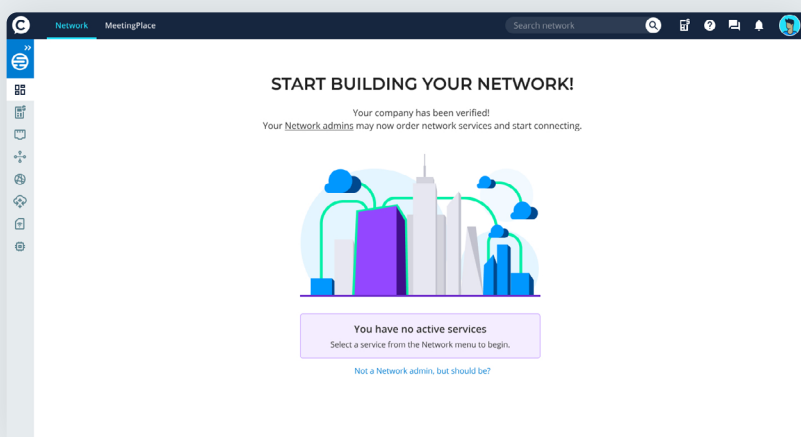
## **Integrate seamlessly** with the world's largest cloud platforms

Use CloudRouter® to instantly create a private and secure meshed network for your multi-cloud environment - connecting any cloud to any cloud or any cloud to any location without the need for dedicated hardware.

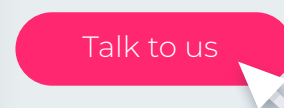
Access all the world's largest cloud platforms, including AWS, Google Cloud, Microsoft Azure, Oracle Cloud, IBM Cloud, Alibaba Cloud and more, with real-time network provisioning and high availability of bandwidth.



## More choice with your **multi-cloud environment**

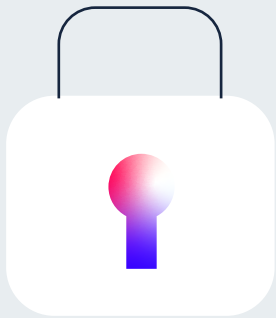


Choose from more than 150 cloud on-ramps worldwide, with new locations being added all the time.



# CloudRouter® benefits [watch the video now](#)

Experience global virtual routing across one of the world's largest high-performance networks.



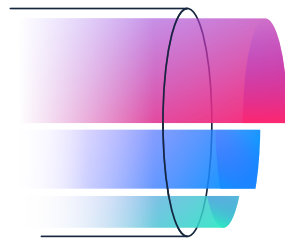
## Private & secure

Connections between clouds - without the need to install, manage or maintain any equipment.



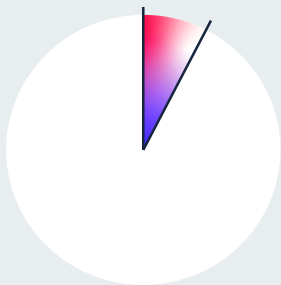
## Enhanced and dynamic routing

Create a virtual "full mesh" network between your network endpoints.



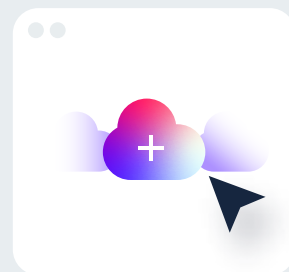
## Choose your Class of Service

Prioritise traffic for your mission-critical applications.



## Spin up services for as little as **one hour**

Flex bandwidth on-demand.



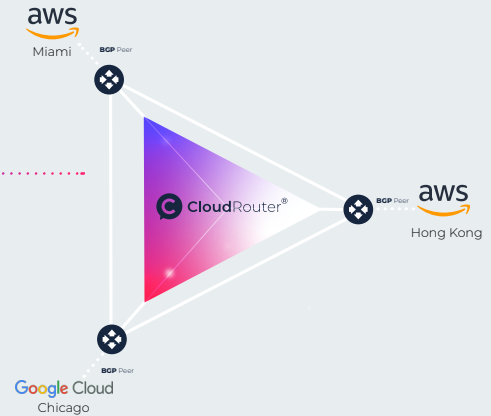
## Point, click, **connect**

Adding clouds is easy and fast.

# CloudRouter® is a **solution for:**

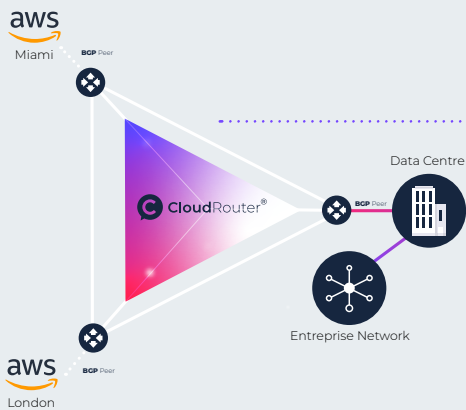
## Multi-cloud environments

- Connect between different cloud platforms.
- Connect between different cloud regions.



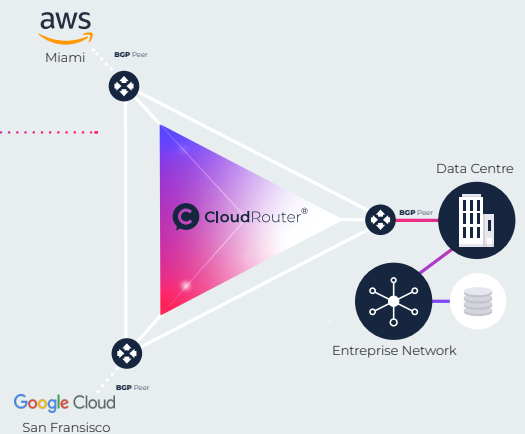
## Hybrid cloud environments

- Set up an Access Port and connect your enterprise data centres and sites into your multi-cloud environment.
- Move traffic between your private WAN and the cloud.



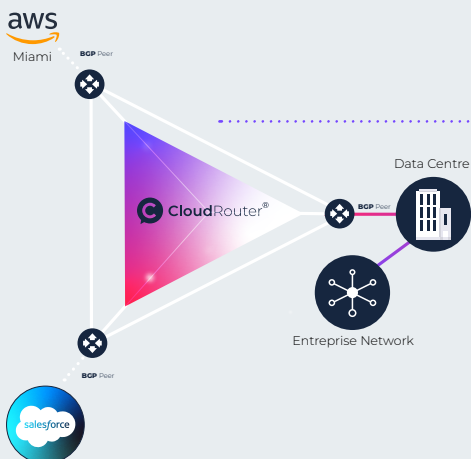
## Backup and redundancy

- Automate your data backup and recovery between clouds with reliable and redundant connectivity.
- Ideal for organisations that run primary systems on one cloud platform and backup or secondary systems on another.

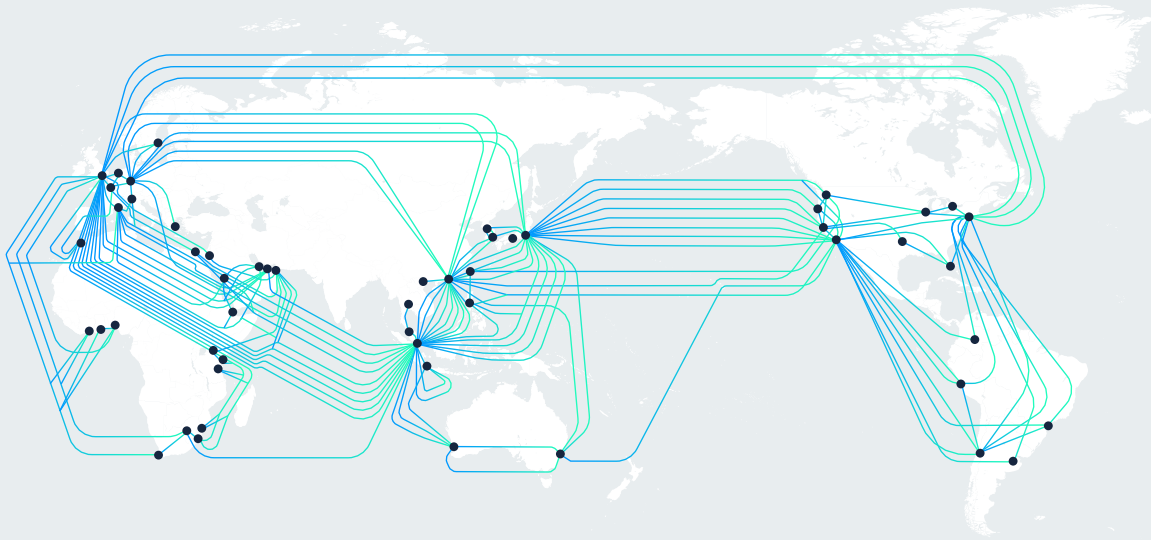


## SaaS ecosystems

- Enhance the performance of your applications with private connections to your SaaS provider.
- Use CloudRouter® to establish secure and fast connections to multiple SaaS providers.



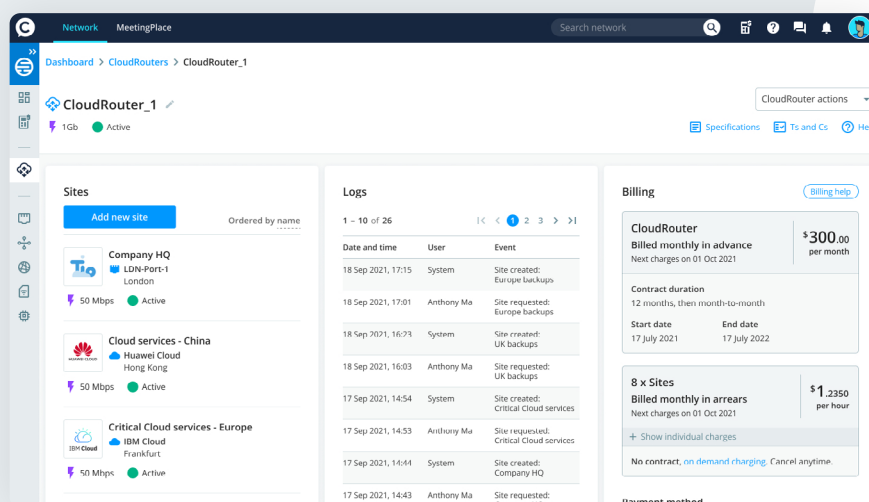
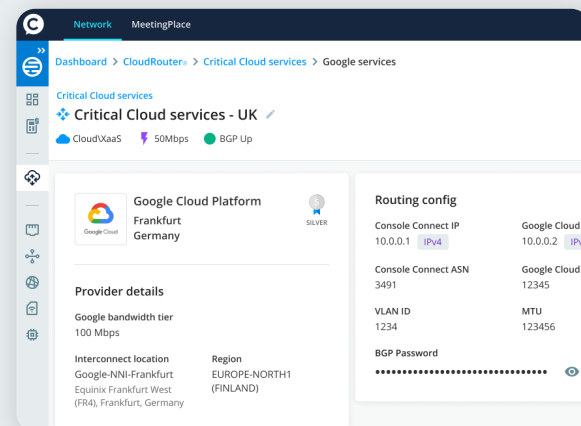
# A virtual global network at your fingertips



Build a virtual network over one of the **world's largest high-performance networks**.

CloudRouter® provides endless opportunities to extend your network environment without worrying about additional network configuration and management. Click and connect together your clouds, SaaS applications, IoT devices, enterprise locations and other network environments, including data centres, Wide Area Networks (WAN) and last mile access.

Once you are all setup, CloudRouter® takes care of the rest – as your traffic dynamically flows between all your network endpoints over our own private global network infrastructure. Which means better network performance, speed and security – and ultimately means an enhanced online experience for you and your customers.

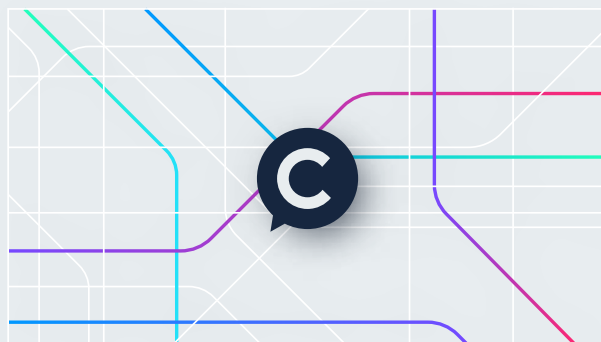


# Console Connect

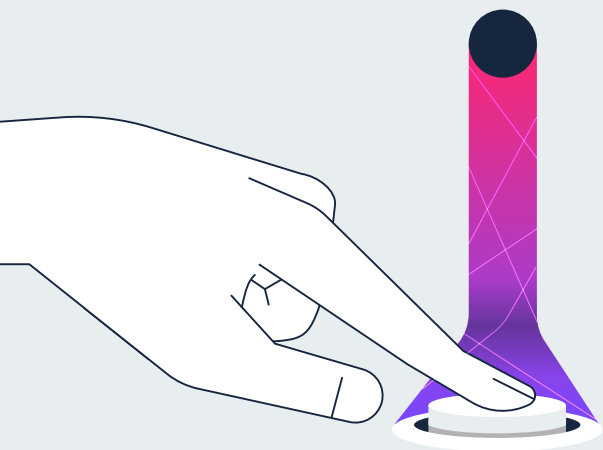
A Console Connect Access Port is required to add your enterprise locations and network environments using CloudRouter®, which also gives you access to the following on-demand services:

## Interconnection (Layer 2) services:

- Between more than 800+ data centres in over 50 countries.
- Direct connections to all major cloud providers.
- Other business partners and service providers on the Console Connect platform.
- Remote peering at the world's largest Internet Exchanges.



[Join today](#)



## Internet On-Demand

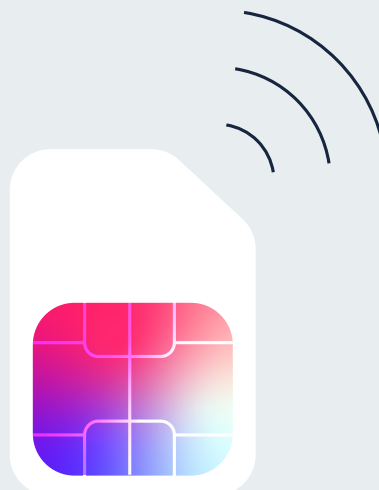
Access our industry-leading IP Transit service – leveraging an IP network that is ranked in the top 10 globally - whenever you need it.

[Find out more](#)

## Internet of Things

Global IoT connectivity from edge to cloud, all managed and orchestrated by the Console Connect platform.

[Enquire now](#)



# How do I **sign up?**

Easy as a click! Try it for free:

**Register now**

## Australia

Level 3 | 200 Mary Street | Brisbane QLD 4000 | +61 739 004 102

## United Kingdom

7th Floor | 63 St. Mary Axe | London EC3A 8AA | +44 (0)207 173 1700

## France

2/F | 16 rue Washington | 75008 Paris | +33 01 86 26 64 08

## Greece

340 Kifisias Avenue/340 Olimpionikon | Neo Psychiko 154 51 | Athens | +30 210 6715100

## United States

Unit 3120 | 31/F Empire State Building | New York | NY 10118 | +212 389 6273

## Singapore

6 Temasek Boulevard | #41-04A/05 | Suntec Tower Four | 038986 | +65 6429 3988

## Hong Kong

20/F, Telecom House | 3 Gloucester Road | Wan Chai | +852 2888 6688

## Japan

3/F Marunouchi Mitsui Building | 2-2, Marunouchi 2-chome | Chiyoda-ku | Tokyo 100-0005 | +81 6686 9660

## South Africa

Building 12 | Woodmead Estate | 1 Woodmead Drive | Woodmead | Johannesburg 2191 | +27 (0)11 797 3300

## UAE, Dubai

Office 504 & 505 | Level 5 | Arjaan Business Tower | Dubai Media City | +971 4 4467480

**Take control | Cut complexity | Make interconnection effortless**

**Have other questions we didn't cover?**

Join our community



[www.consoleconnect.com](http://www.consoleconnect.com)

Talk to us: [sales@consoleconnect.com](mailto:sales@consoleconnect.com)